



Training Materials on Weaving





CONTEMPORARY **WEAVING PATTERNS**


Weaving with colour and texture: a unique guide to over 150 exceptional patterns

MARGO SELBY




Complementary Colors

- Complementary Colors and found opposite each other on the color wheel. They are associated with contrast, offering you the opportunity to be bold and create some eye-catching fabric.




Mix and match colourways

In this stripe, orangey tones of brown have been used alongside turquoise shades of blue, giving a fresh approach to autumn- and summery seaside-inspired colourways. Experiment by mixing seasonal colours together.



Breaking up blocks

Red and green are used here in a bold and direct way. The stripe width is varied so that the green provides a striking accent, while the thin burgundy strip subtly breaks up the red blocks.



From dark to light

Many variations of yellow and purple are featured here alongside other colours. This wrapping graduates into a brighter colour palette, from the prominence of purple towards more dominant yellow. This can be an effective way of combining lights and darks in your fabric.

Color Groups

Keep it cool

This stripe features greens and blues, which are often associated with the cool end of the colour spectrum. Choose light and bright greens to freshen up your palette, or darken it with the use of deeper shades.

Warming it up

Reds and pinks are used here in a small-scale repeat. These tones are often referred to as warm colours and can be used to transform a cool warp. Deep red and light pink have been applied consistently in this stripe, complemented by a subtly changing small stripe.

Naturally inspired

Browns and neutrals of different tones work well here to create a natural palette. Pinstripes have been used alongside blocks of the same colour, creating a visually interesting, gradual blend of colour.

- Different hues tones the same color family work well when they are used together. Applying contrasting hues and tones when weaving can create an effective variegated look to any warp or weft.

Ashfall

The extra warp floats in areas when woven and then is cut off the loom to create these tassels.

■ Slate silk
■ Hyacinth linen

Pattern E



1 2 3 4

Pattern F



1 2 3 4

Ex14, Fx14



Warp

Repeat

How the pattern repeats



Back of fabric



Weft



Magma

Hyacinth linen is used in both the warp and the weft, giving a solid coloured base cloth as a backdrop to the extra warp stripe.

Pattern G



1 2 3 4

Pattern H



1 2 3 4

Gx1, Hx1



Warp

Repeat

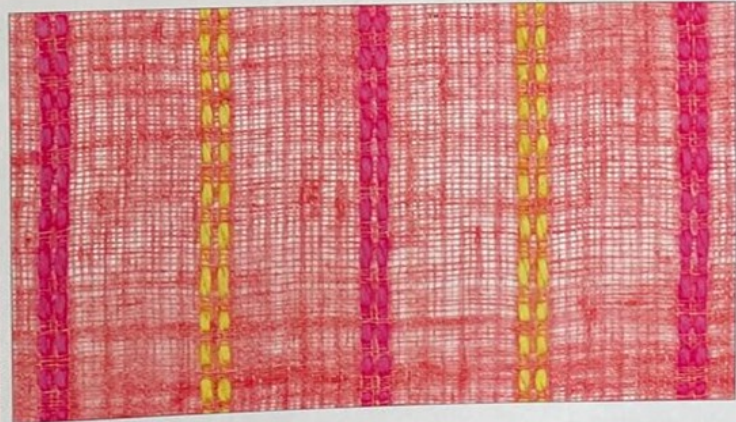
How the pattern repeats



Back of fabric



Weft



Ashfall

- The extra warp floats in area when woven and then is cut off the loom to create these tassels.

Color wheel

